










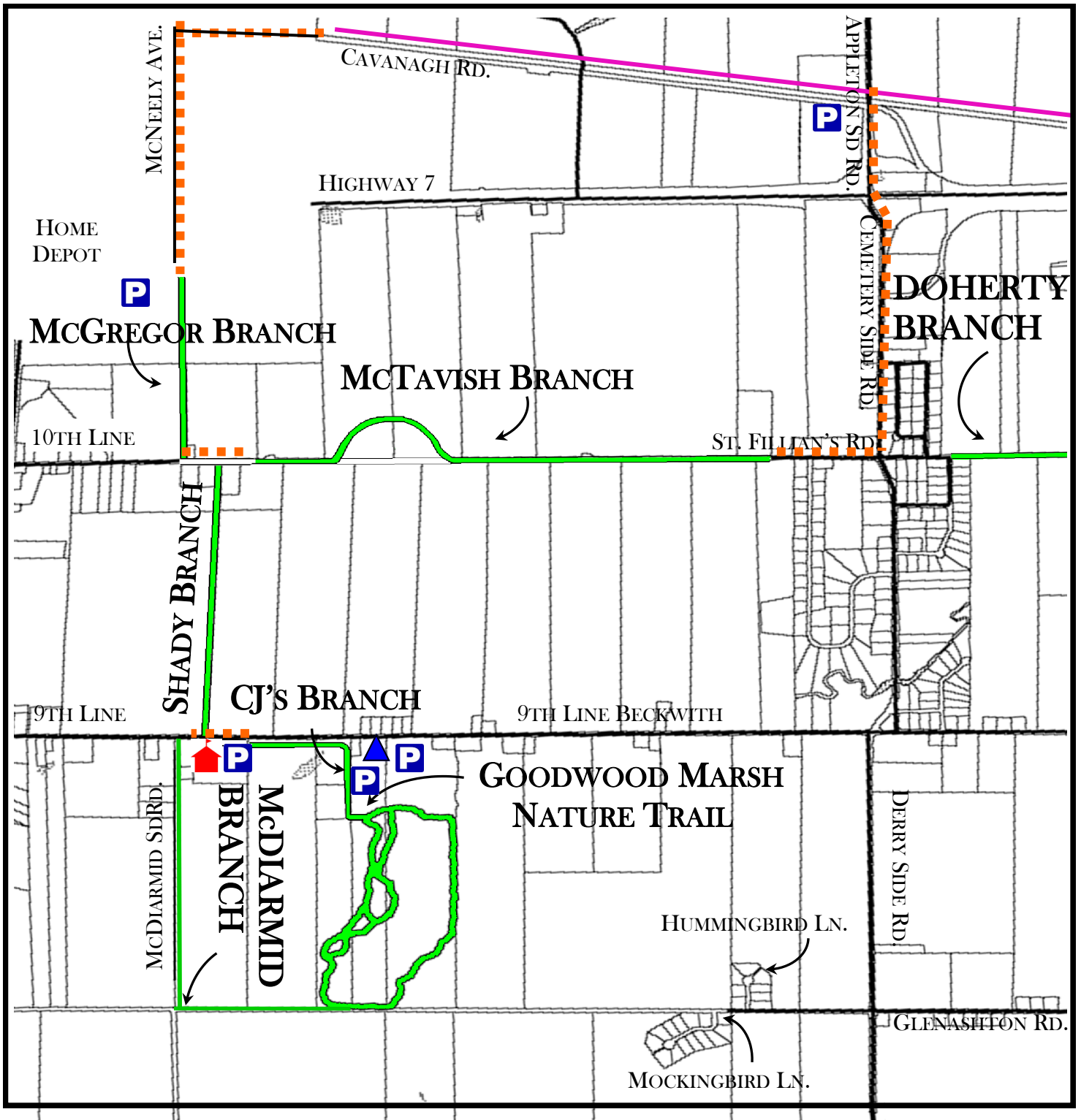
Beckwith Trail

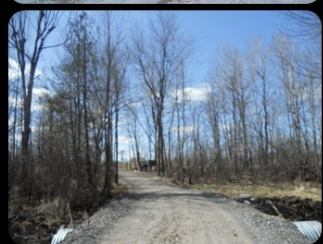
CJ's Branch – 0.75 km
Goodwood Marsh Nature Trail – 4.37 km
McGregor Branch – 0.5 km
McDiarmid Branch – 1.57 km

Doherty Branch – 2.56 km
McTavish Branch – 1.55 km
Shady Branch – 1.45 km
Total length of trail system – 12.75 km
(does not include roadways)

Legend:

-  = Trail
 = TransCanada Trail
 = Road connecting trail
 = Road
 = School
 = Park
 = Parking





BECKWITH TRAIL

Trail Rules:



- Use trail at own risk.
- Please stay on trail.
- Respect property rights.
- Dogs must be leashed.
- Poop & Scoop—
(bags and receptacles provided)
- No motorized vehicles allowed



Trail branches with permitted snowmobile use include:

- Shady Branch
- McTavish Branch

Partnerships that made this possible:

- Township of Beckwith
- The Federal Government
- The Provincial Government
- Mr. Peter Snyder
- Upper Canada District School Board
- Beckwith Public School
- Town of Carleton Place
- BEAST Snowmobile Club
- Valley Kennel Club
- Ashton United Church
- Mr. Steven Lewis

Municipal Office:
1702 9th Line Beckwith
RR#2, Carleton Place, ON
K7C 3P2

Phone: 613-257-1539
Toll Free: 1-800-535-4532
Fax: 613-257-8996
www.twp.beckwith.on.ca

Recreation Complex:
1319 9th Line
RR#2, Carleton Place, ON
K7C 3P2